

Directions

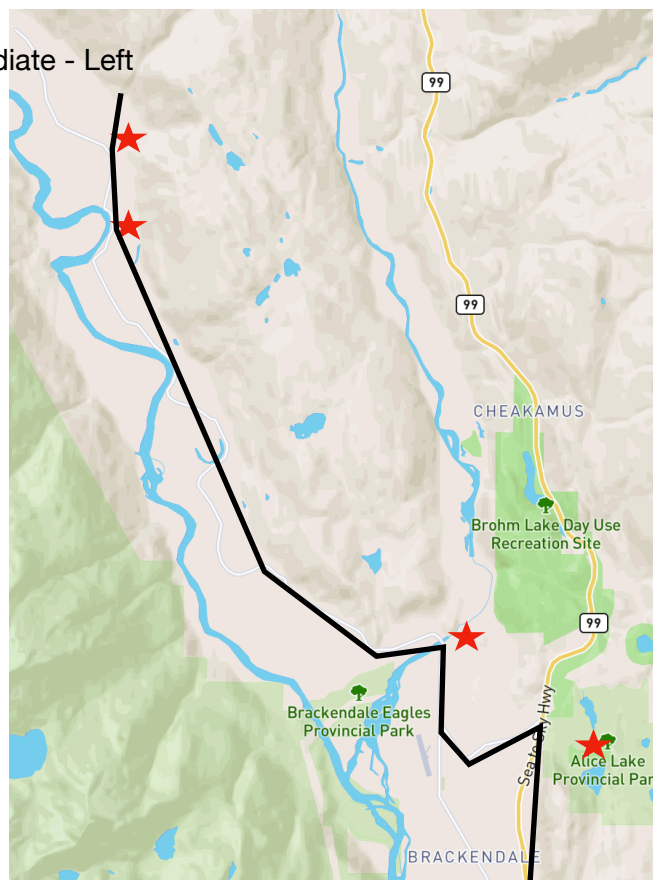
We are about a 20 minute drive from Squamish. BC.

On the Sea to Sky Highway (99 N) at the Alice Lake Junction you turn left on the Squamish Valley Road. After crossing the Chekeye Bridge you stay left which remains the Squamish Valley Road. (Do not go slightly high up the Paradise Valley). You will wind through First Nations land beside the Squamish River and after about 15 kilometres you will cross a one way bridge (Pilchuck Creek).

Queen of Peace Monastery is on Cloudburst Crescent (the first right after the one way bridge) and immediately on the left you will see a big rock with Queen of Peace written on it. This is our driveway which will lead you up to the monastery. Go straight up the hill to the guest entrance and chapel.

Cloudburst Crescent - immediate - Left

After 1 way Pilchuck Bridge -
1st Right
on to Cloudburst Crescent



After Chekeye Bridge - keep Left

Alice Lake - Left

Directions